



FOR LEASE

**3098  
Richmond  
Road**

*Lexington, KY*



**GORDY HOAGLAND, CCIM**

Principal Broker

502.387.1734

Ghoagland@Whiteoakcre.com



**CONNOR HOBBS**

Associate

502.724.5924

Chobbs@whiteoakcre.com



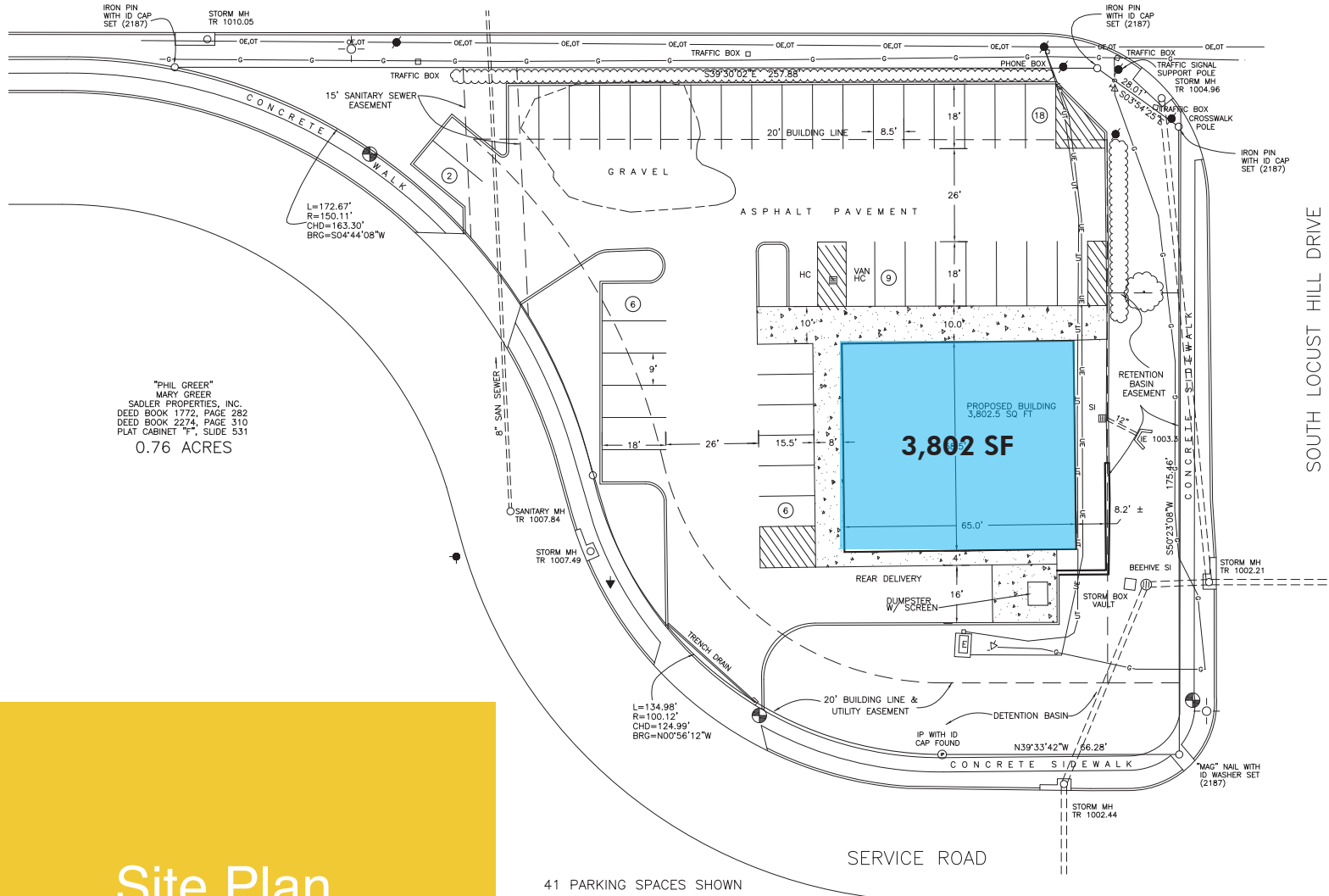
## Property Details

- 3,802 SF on 1.03 Acres
- Please contact broker for pricing
- Zoned B-3, Highway Service Business
- Highly Visible signalized corner on the heavily trafficked Richmond Road
- Prominent Retail and Restaurant Lexington Corridor
- Large Pylon Sign
- 41 Parking Spaces
- Built in 2011

## 2022 Demographics

	1 Mile	3 Miles	5 Miles
<b>Population</b>	15,686	98,699	214,861
<b>Total Households</b>	7,179	43,541	92,196
<b>Median HH Income</b>	\$52,289	\$67,786	\$61,220
<b>Average HH Size</b>	2.17	2.25	2.22





"PHIL GREER"  
 MARY GREER  
 SADLER PROPERTIES, INC.  
 DEED BOOK 1772, PAGE 282  
 DEED BOOK 2274, PAGE 310  
 PLAT CABINET "T", SLIDE 531  
 0.76 ACRES

Site Plan

41 PARKING SPACES SHOWN







